






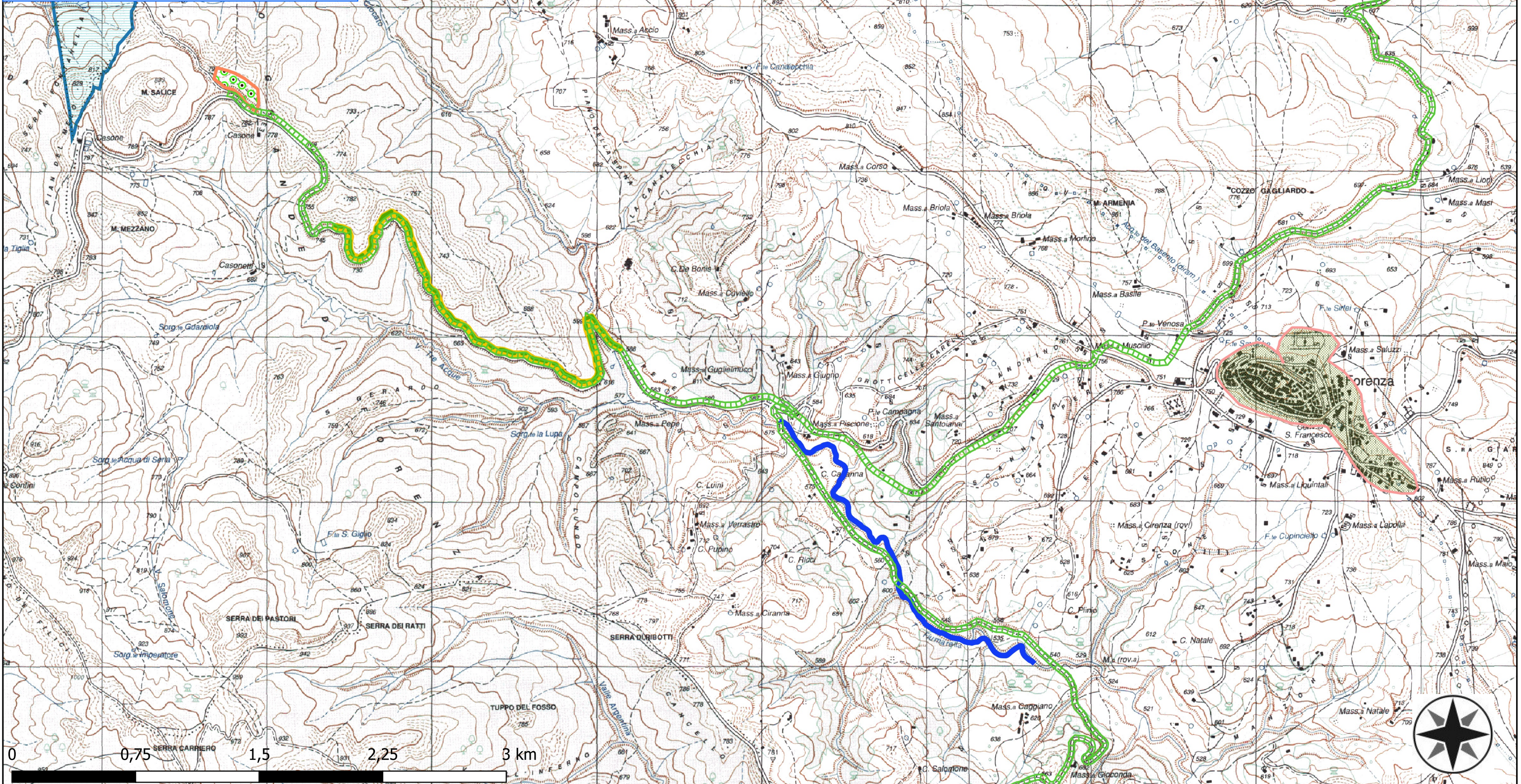


FORENZA

-  1.1 manutenzione fascia tagliafuoco
-  6.1 decespugliamento aste fluviali1
-  6.3 decespugliamento scarpate stradali
-  6.1 decespugliamento valloni1
-  5.1 decespugliamento area boscata1
-  forenza verde urbano
-  BENI PAESAGGISTICI ART. 142

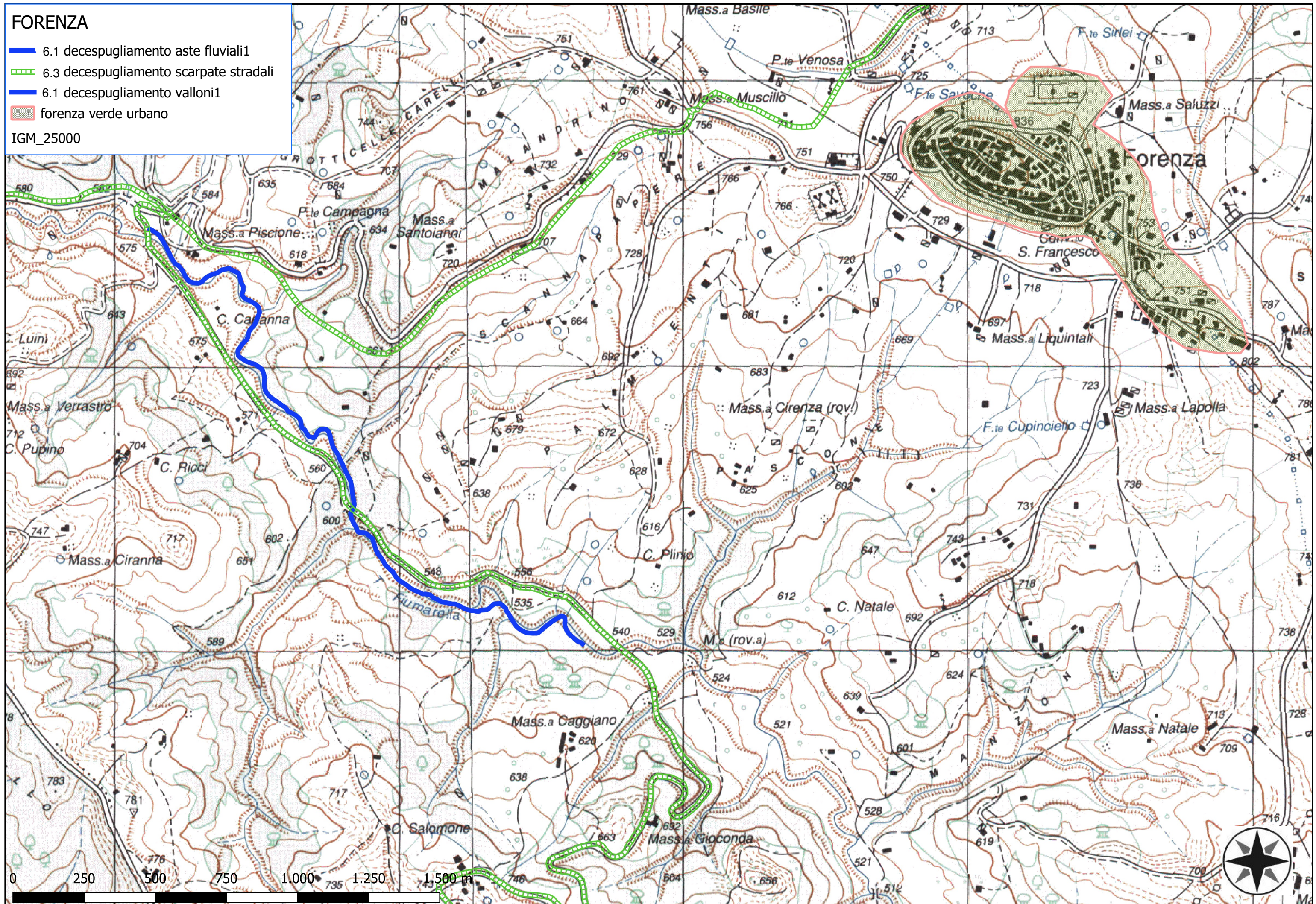
IGM_25000



FORENZA

- 6.1 decespugliamento aste fluviali1
- 6.3 decespugliamento scarpate stradali
- 6.1 decespugliamento valloni1
- forenza verde urbano





IGM_25000



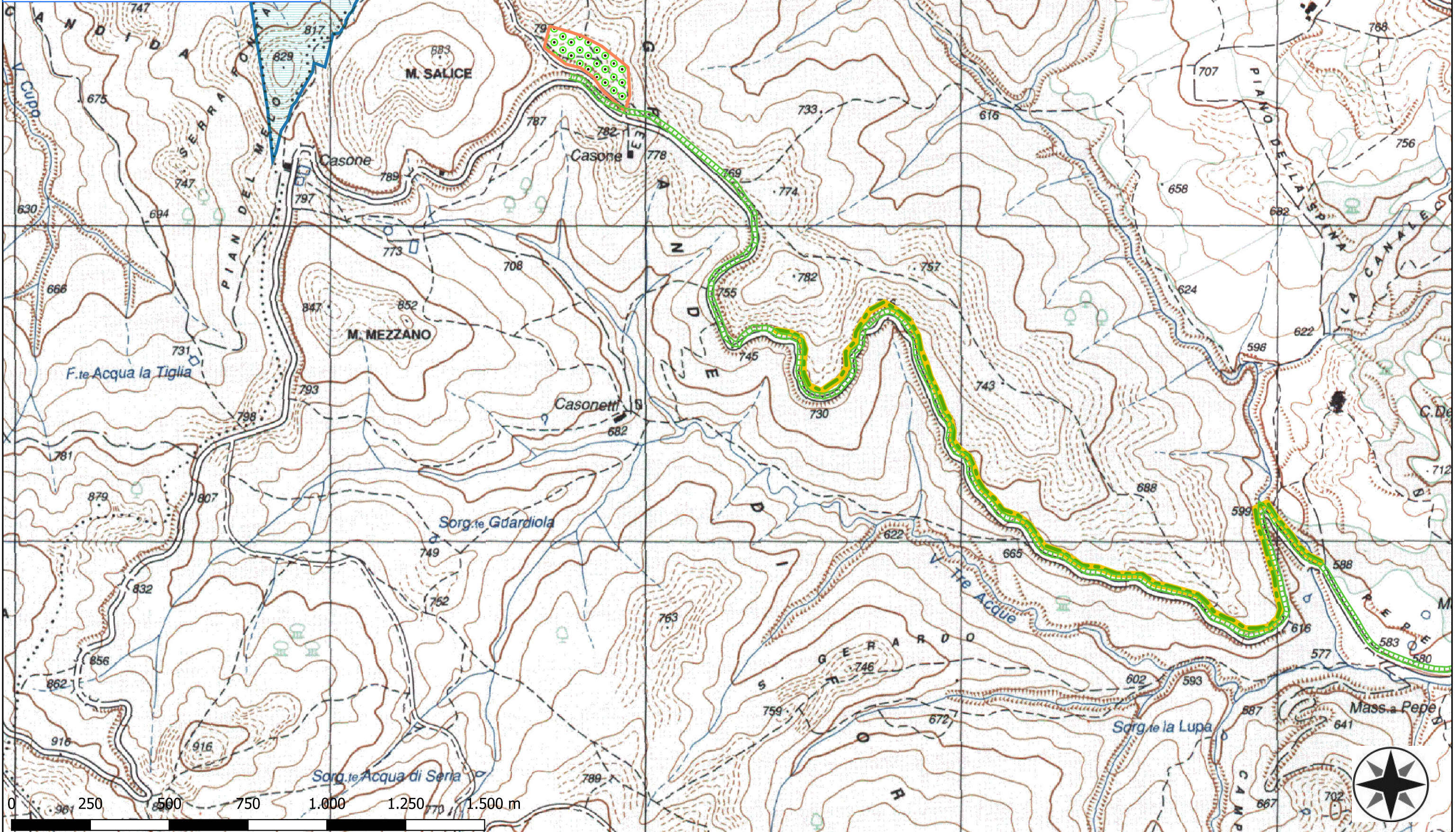
0 250 500 750 1.000 1.250 1.500 m









FORENZA

-  1.1 manutenzione fascia tagliafuoco
-  6.3 decespugliamento scarpate stradali
-  5.1 decespugliamento area boscata1
-  BENI PAESAGGISTICI ART. 142

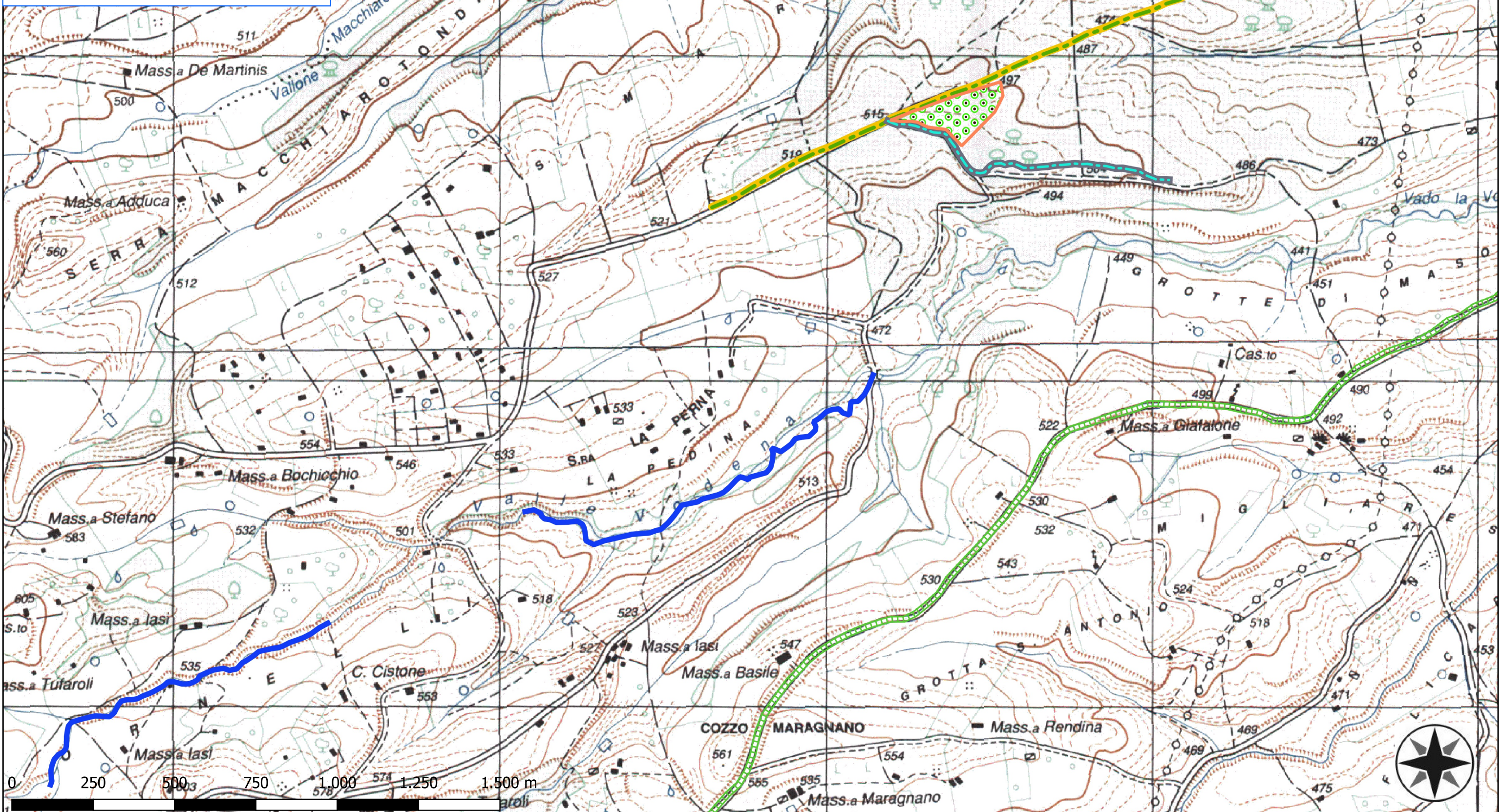
IGM_25000



FORENZA

-  1.1 manutenzione fascia tagliafuoco
-  6.1 decespugliamento aste fluviali1
-  6.3 decespugliamento scarpate stradali
-  4.1 manutenzione pista forestale1
-  6.1 decespugliamento valloni1
-  5.1 decespugliamento area boscata1

IGM_25000



FORENZA

- 1.1 manutenzione fascia tagliafuoco
- 6.1 decespugliamento aste fluviali1
- 4.1 manutenzione pista forestale1
- 6.1 decespugliamento valloni1
- 5.1 decespugliamento area boscata1

IGM_25000

