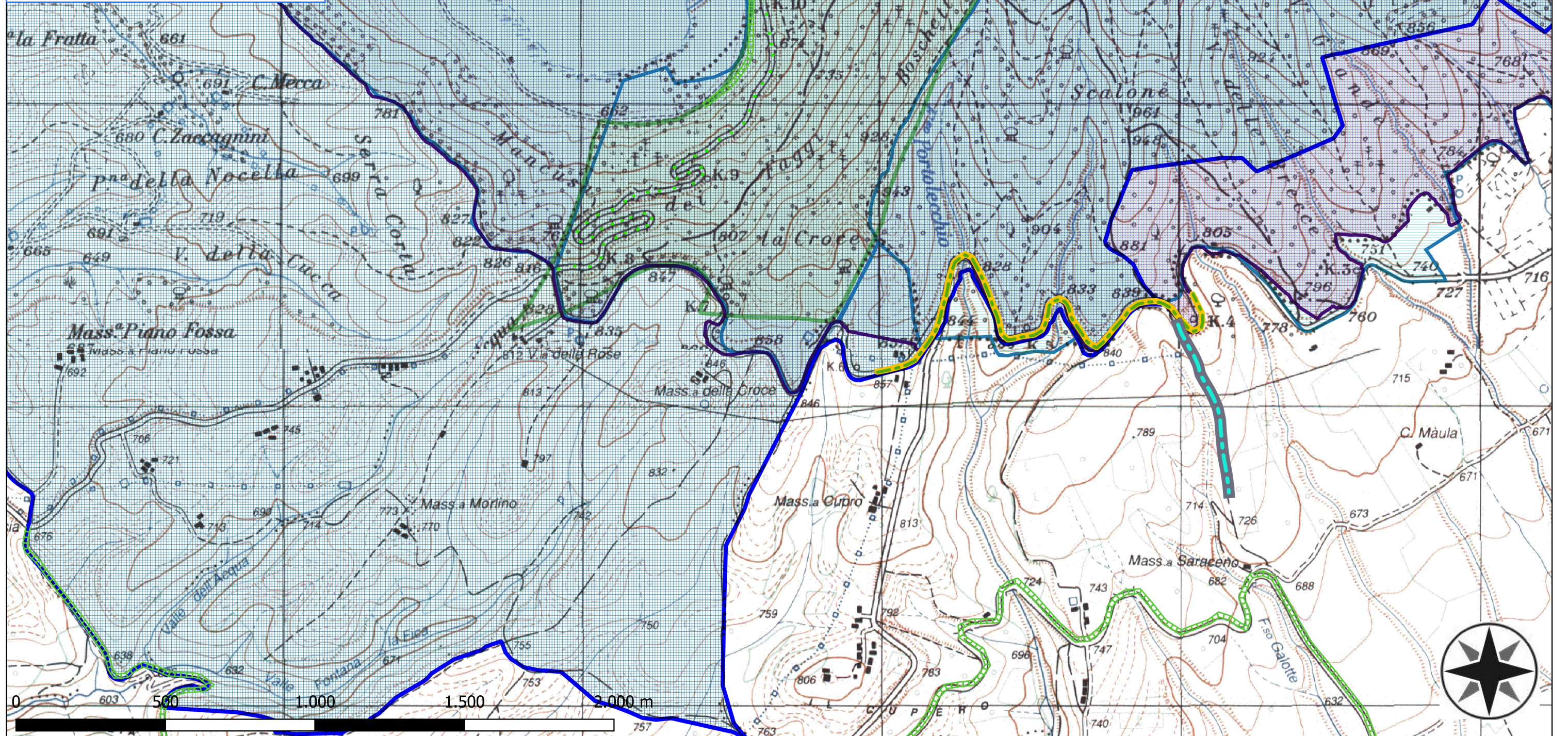












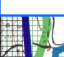


# ATELLA

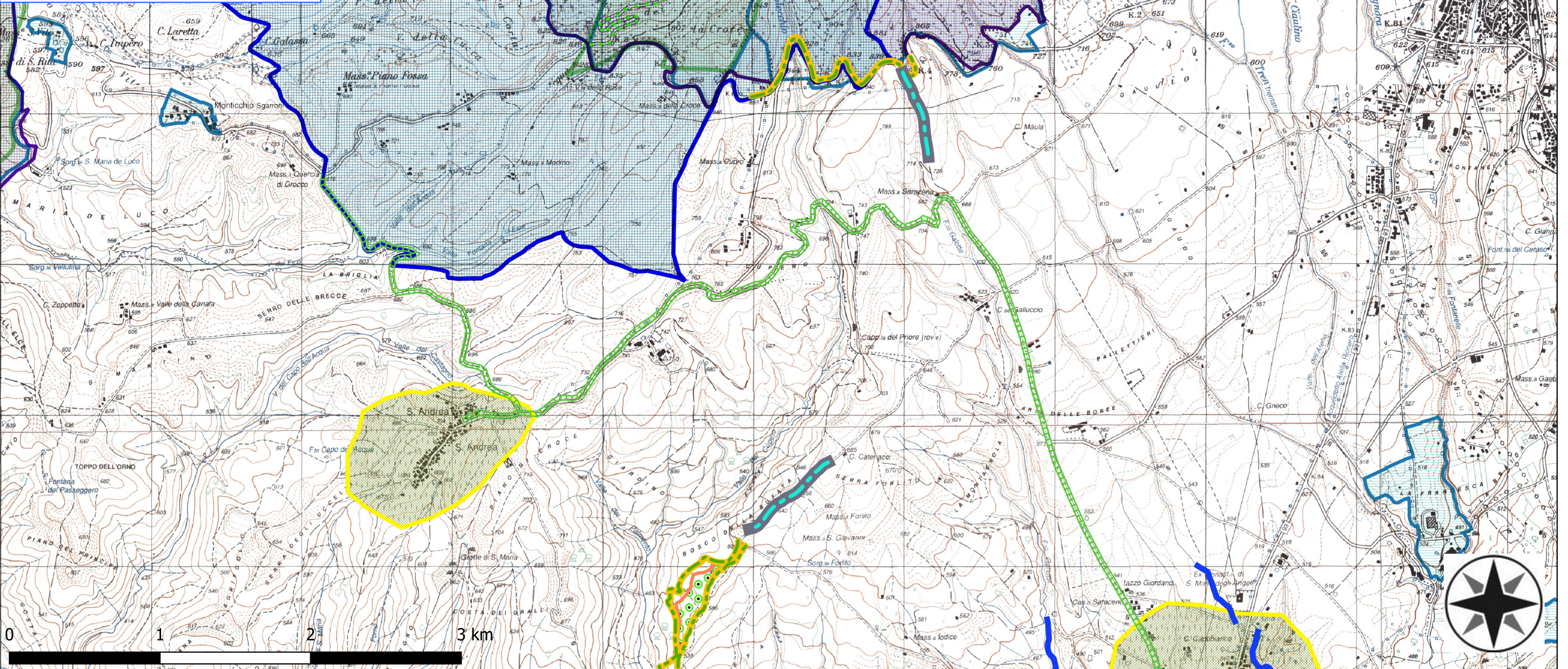
- 1.1 manutenzione fascia tagliafuoco1
- 3.1 sistemazione pista forestale1
- 5.2 decespugliamento scarpate
- verde urbano atella
- BENI PAESAGGISTICI ART. 142
- BENI PAESAGGISTICI ART. 136
- AREA PARCO
- AREA SIC
- AREA ZSC
- AREA ZPS
- IGM\_25000



# ATELLA

-  1.1 manutenzione fascia tagliafuoco1
-  3.1 sistemazione pista forestale1
-  4.1 decespugliamento fossi1
-  5.2 decespugliamento scarpate
-  7.1 decespugliamento boschi1
-  atella attività vivaistica
-  verde urbano atella
-  BENI PAESAGGISTICI ART. 142
-  BENI PAESAGGISTICI ART. 136
-  AREA PARCO
-  AREA SIC
-  AREA ZSC
-  AREA ZPS

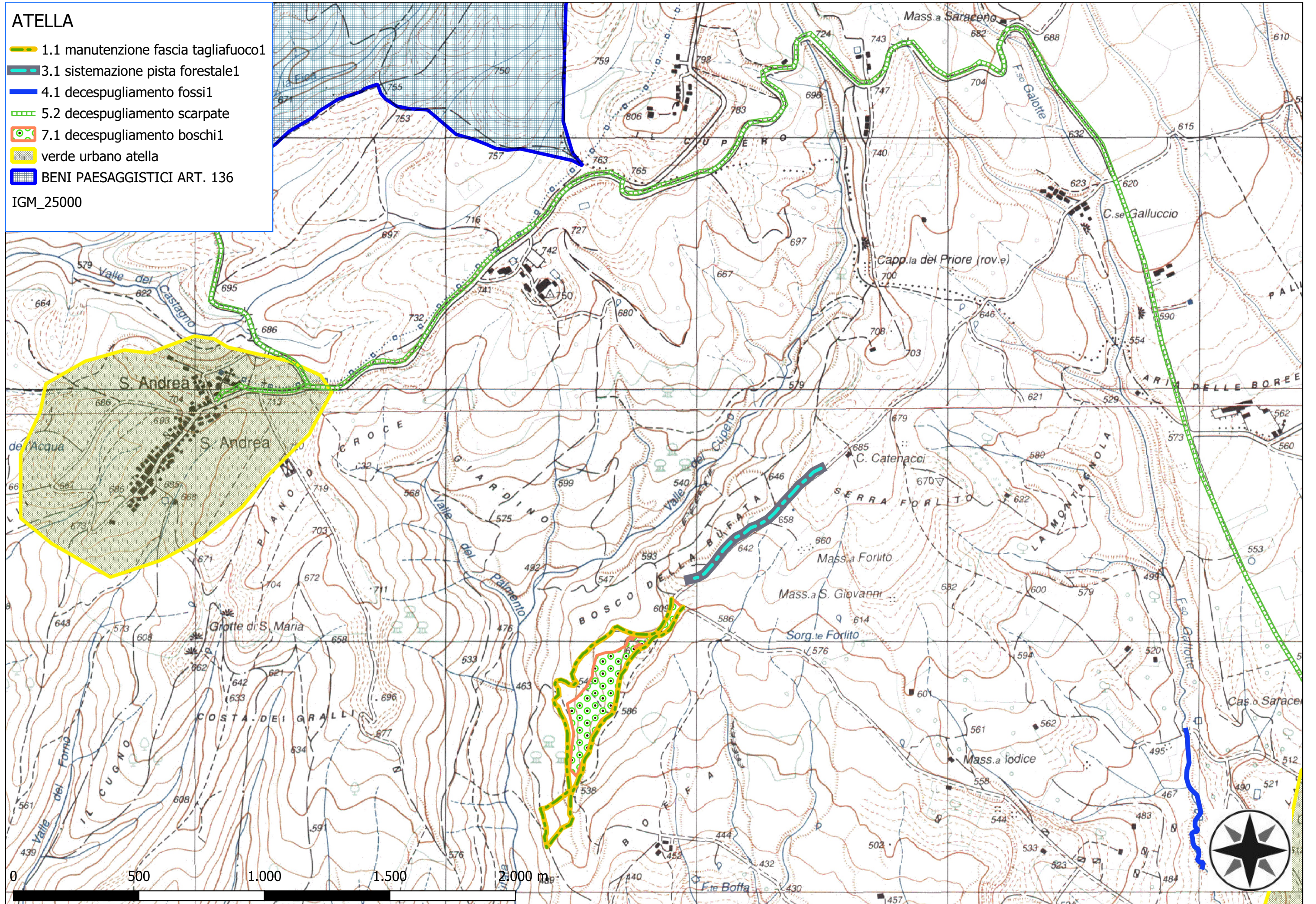
IGM\_25000



# ATELLA

- 1.1 manutenzione fascia tagliafuoco1
- 3.1 sistemazione pista forestale1
- 4.1 decespugliamento fossi1
- 5.2 decespugliamento scarpate
- 7.1 decespugliamento boschi1
- verde urbano atella
- BENI PAESAGGISTICI ART. 136

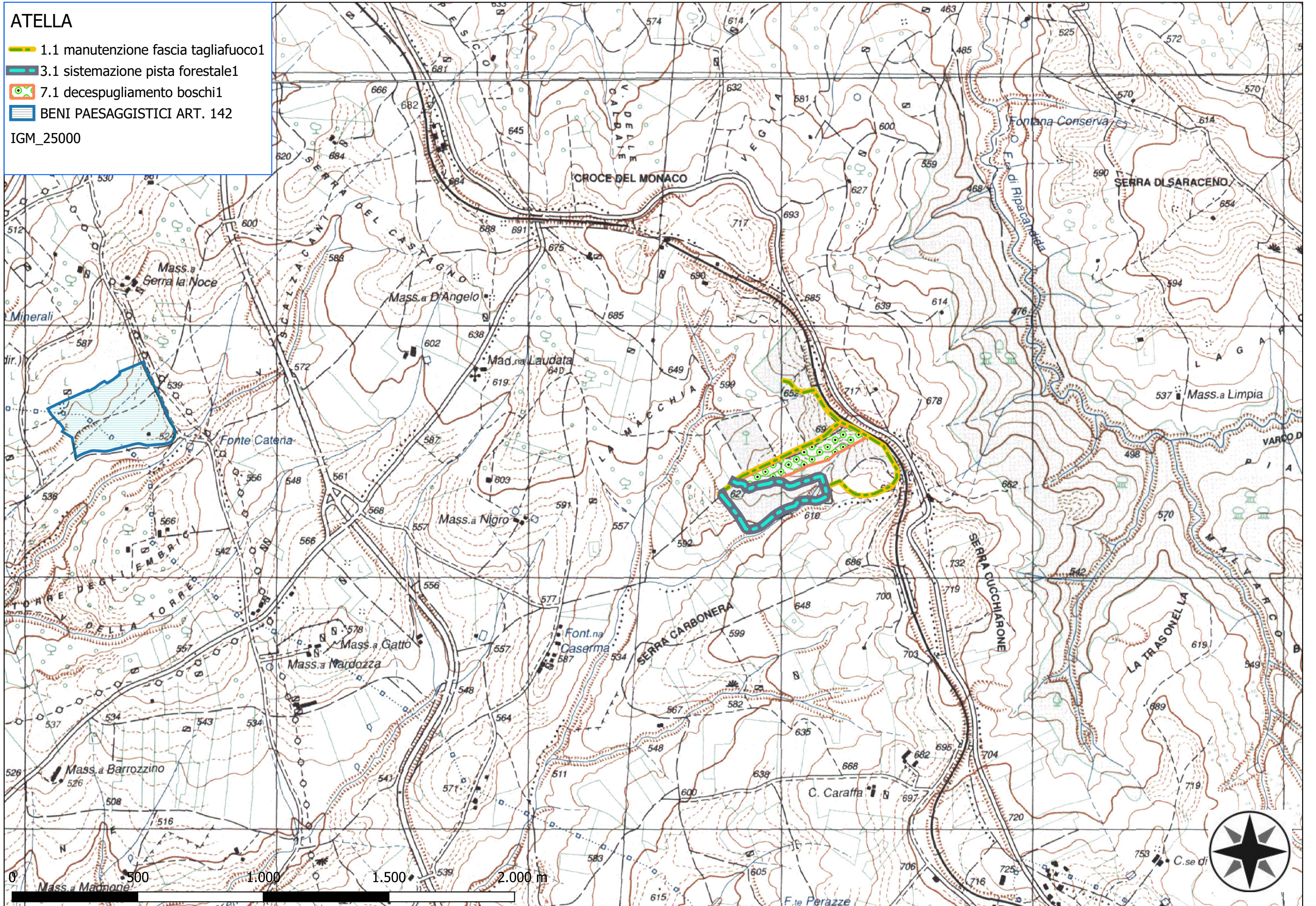
IGM\_25000



# ATELLA

- 1.1 manutenzione fascia tagliafuoco1
- 3.1 sistemazione pista forestale1
- 7.1 decespugliamento boschi1
- BENI PAESAGGISTICI ART. 142

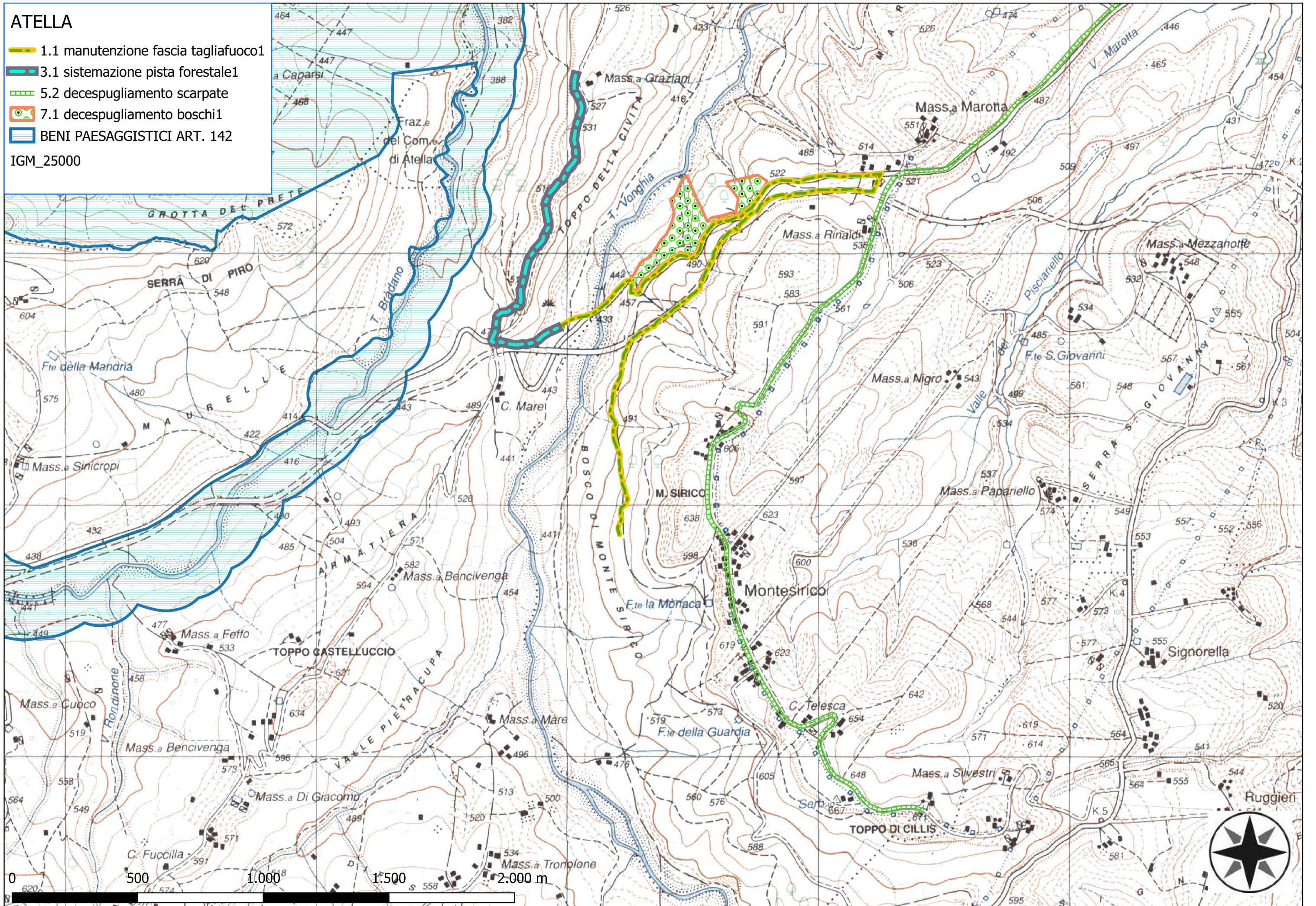
IGM\_25000



# ATELLA

- 1.1 manutenzione fascia tagliafuoco1
- 3.1 sistemazione pista forestale1
- 5.2 decespugliamento scarpate
- 7.1 decespugliamento boschi1
- BENI PAESAGGISTICI ART. 142

IGM\_25000



# ATELLA

- 1.1 manutenzione fascia tagliafuoco1
- 4.1 decespugliamento fossi1
- 5.2 decespugliamento scarpate
- verde urbano atella
- BENI PAESAGGISTICI ART. 142

IGM\_25000

