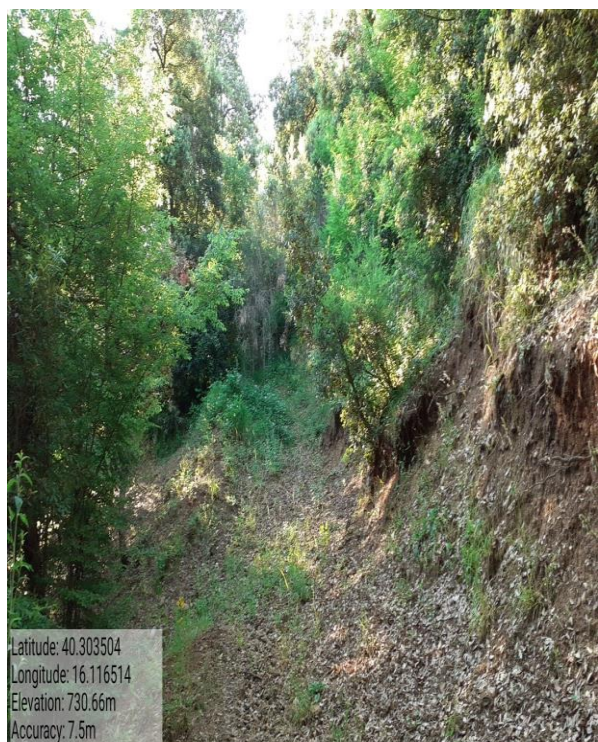
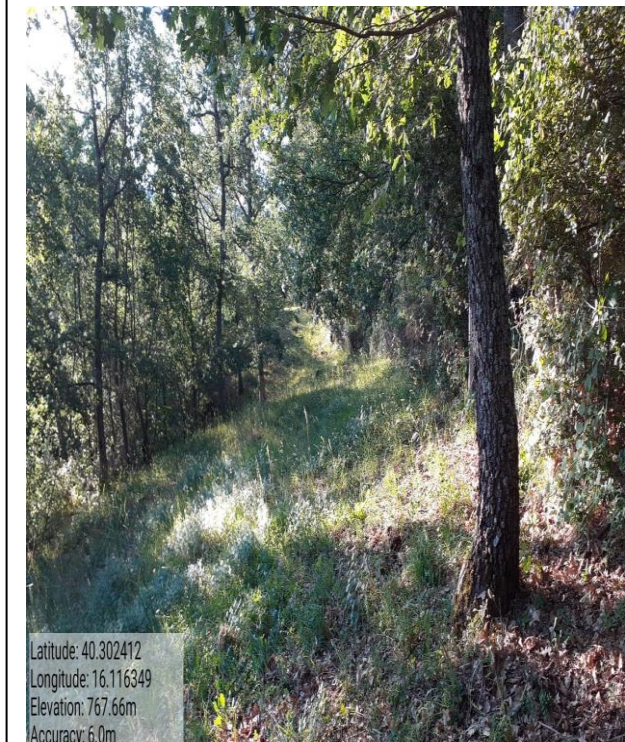


**PROGRAMMA OPERATIVO ANNUALE (P.O.A.) 2023 – Progetto di Forestazione Pubblica
Progetto Generale**



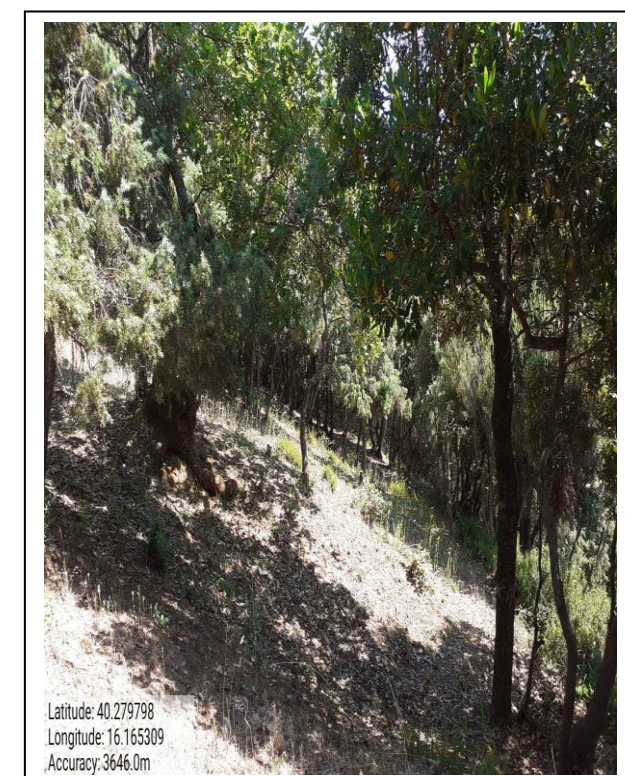
missione 1.1.1 Parriello



missione 1.2.1 Parriello

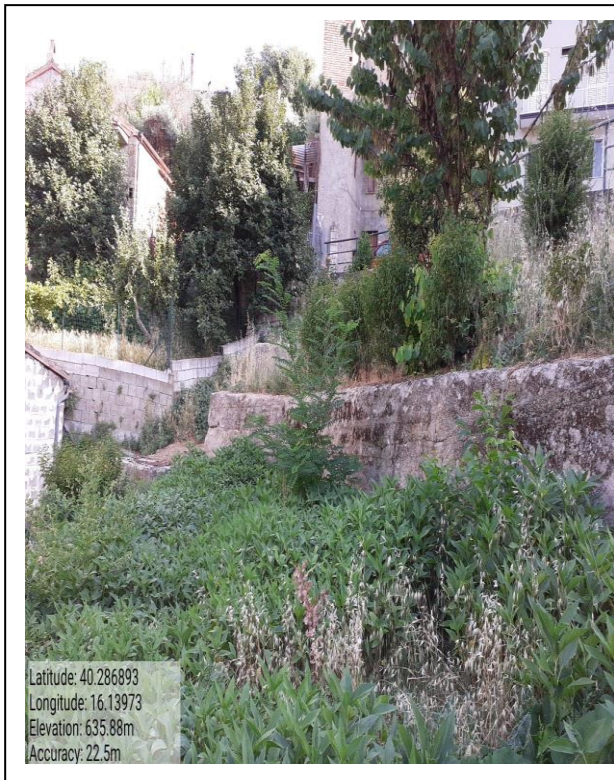


missione 1.3.1 Gallicchio Vetere

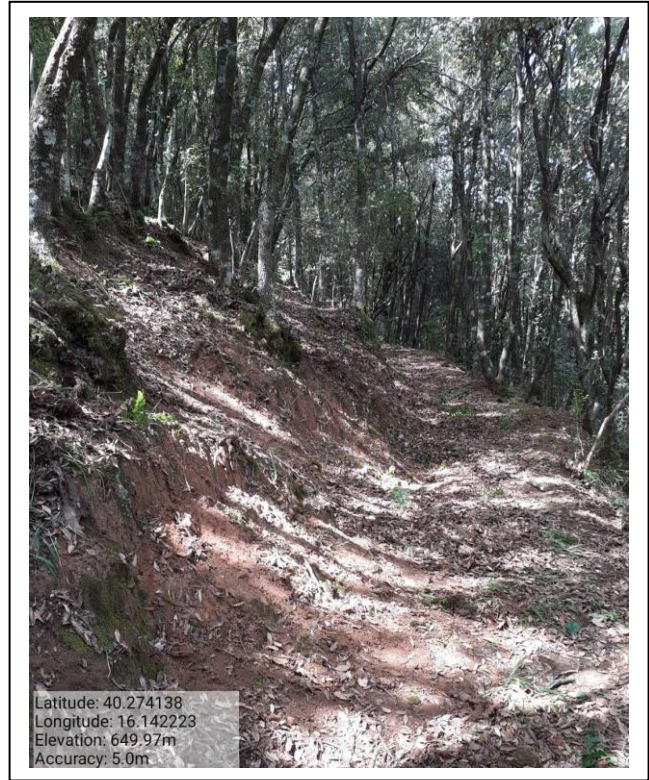


missione 1.4.1 Bruscalupo

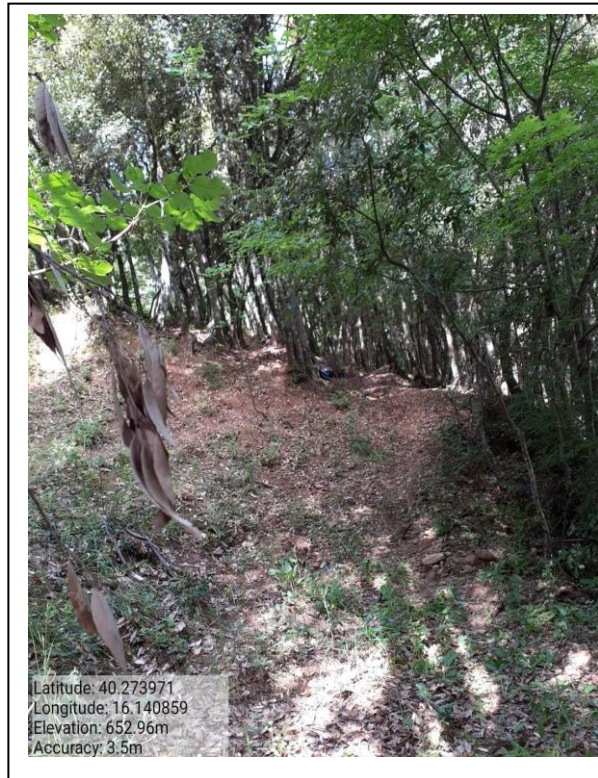
**PROGRAMMA OPERATIVO ANNUALE (P.O.A.) 2023 – Progetto di Forestazione Pubblica
Progetto Generale**



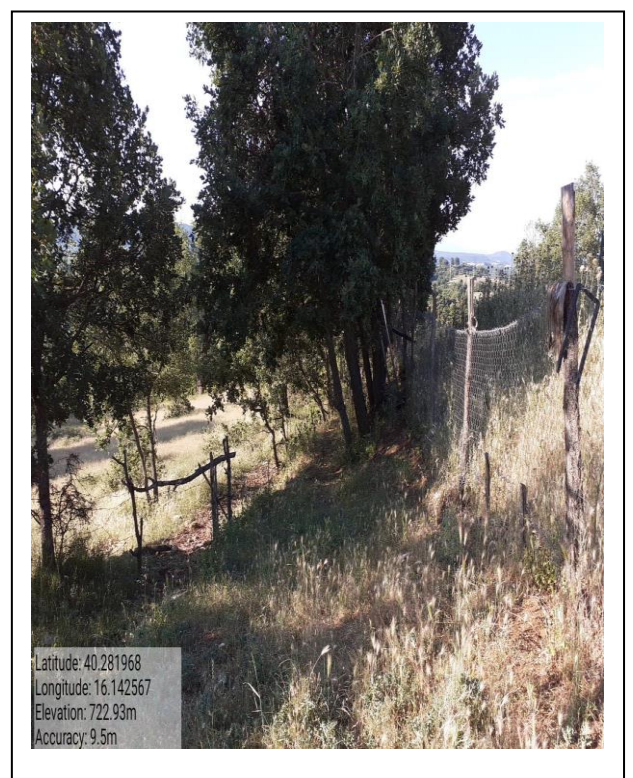
missione 2.1.1 verde urbano e periurbano



missione 4.2.1.1 Gallicchio Vetere



missione 4.2.2.1 Gallicchio Vetere Belvedere

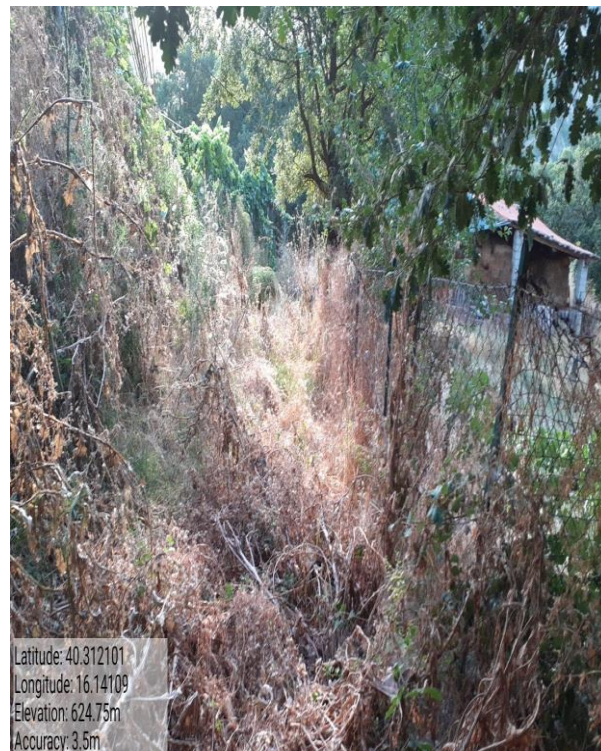


missione 4.2.3.1 Bruscalupo

**PROGRAMMA OPERATIVO ANNUALE (P.O.A.) 2023 – Progetto di Forestazione Pubblica
Progetto Generale**



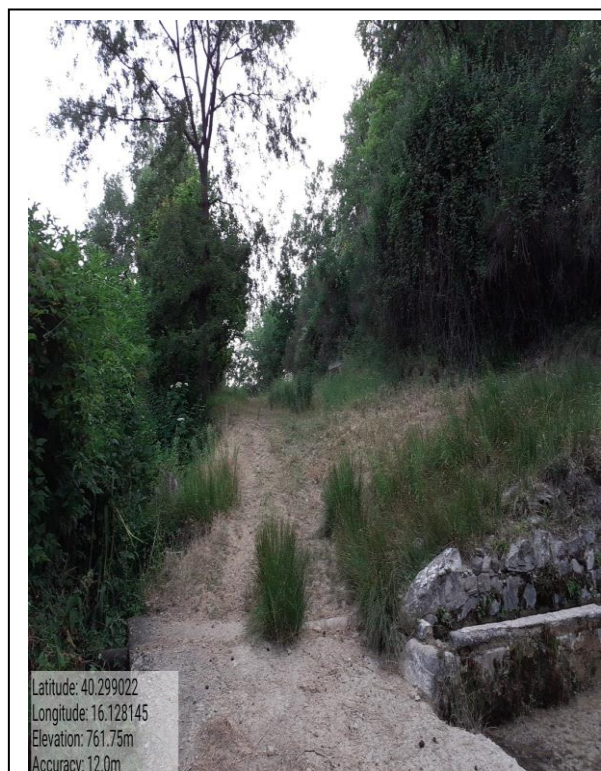
missione 4.2.4.1 Bruscalupo



4.3.5.2 via del Turco

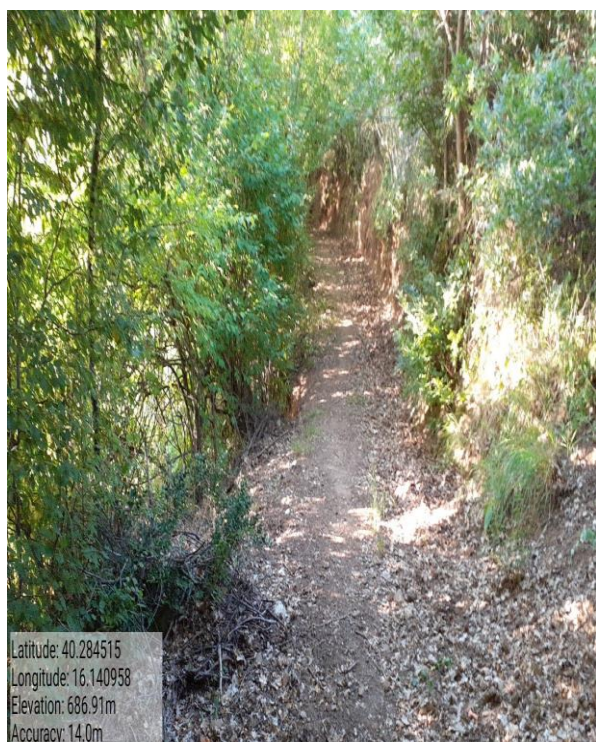


missione 4.3.6.2 via del Turco (Pepp Pong)

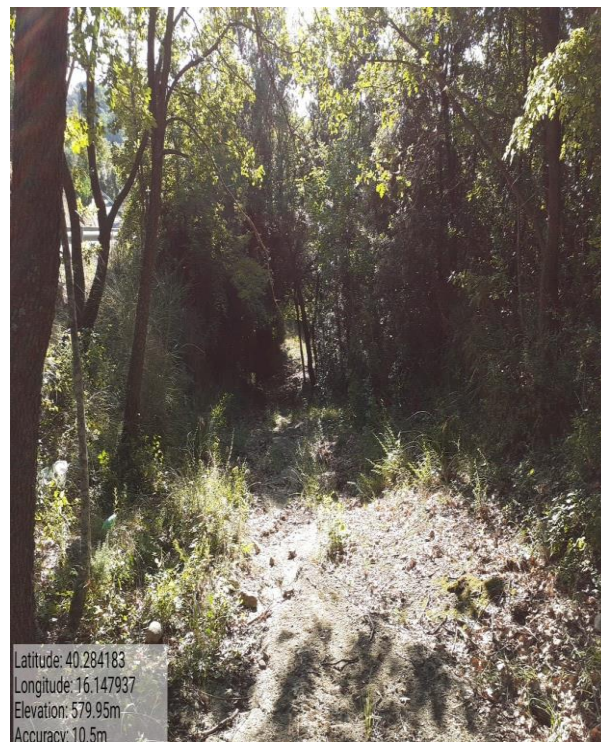


missione 4.3.7.2 strada Chiummarda

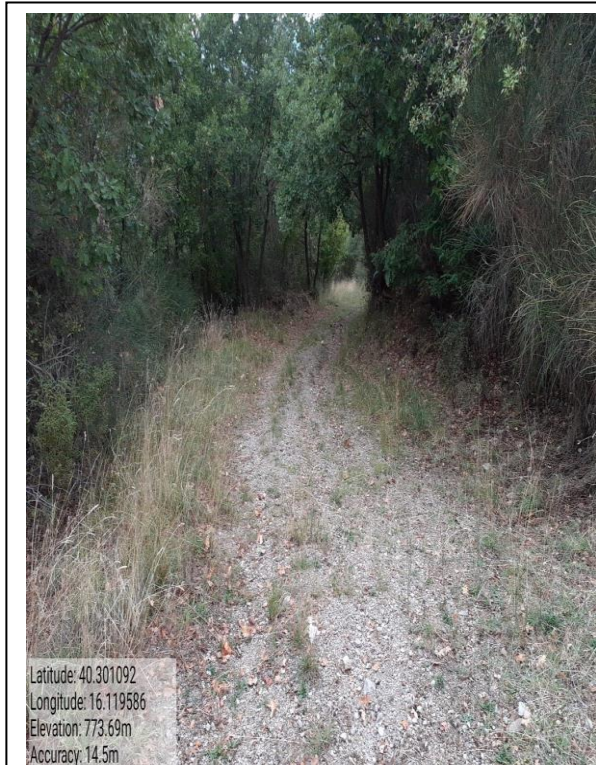
**PROGRAMMA OPERATIVO ANNUALE (P.O.A.) 2023 – Progetto di Forestazione Pubblica
Progetto Generale**



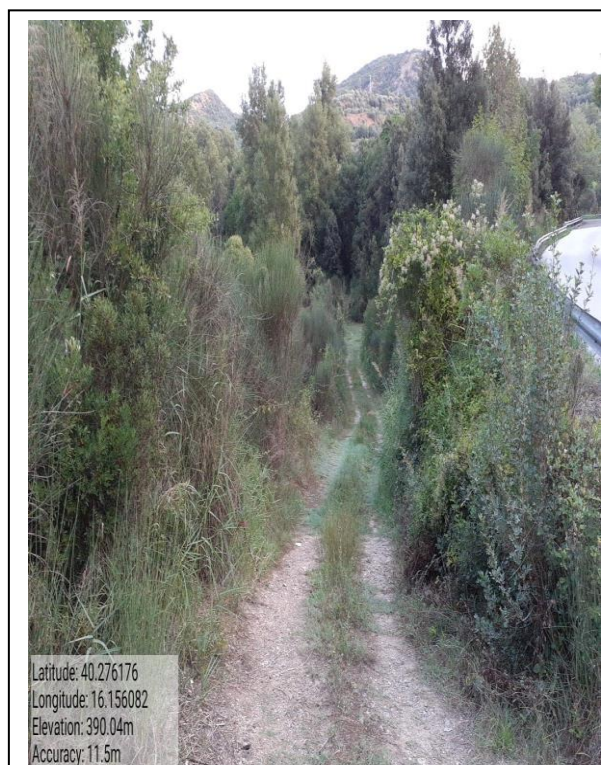
missione 4.3.8.2 Sant'Andrea – Cimitero



missione 4.3.9.2 Tempa Rossa Valterrata



missione 4.3.10.2 Parriello

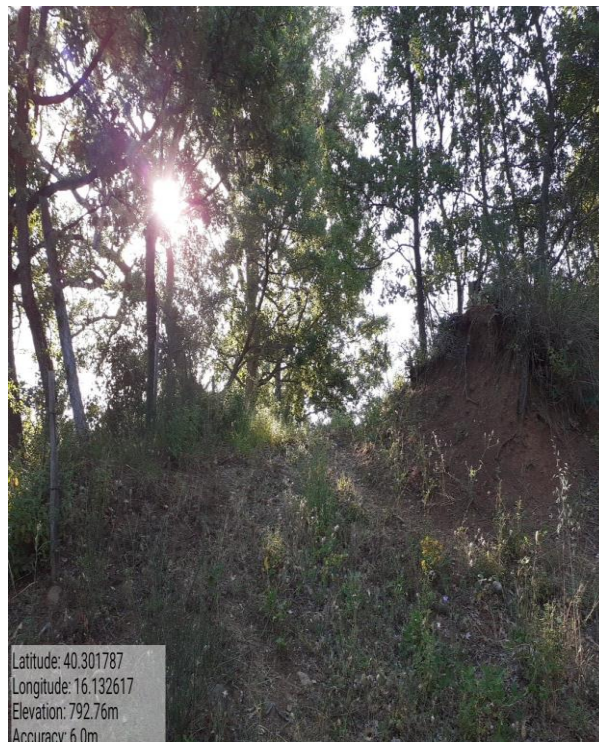


missione 4.3.11.2 San Vito

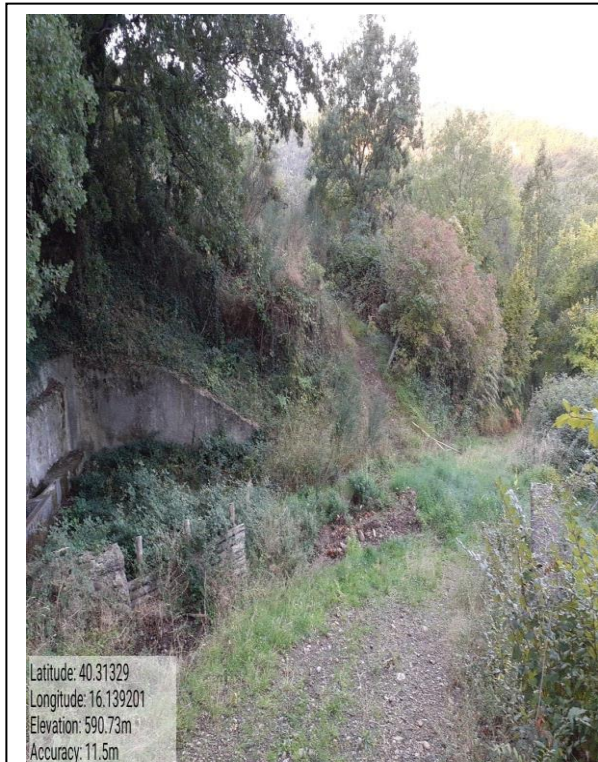
**PROGRAMMA OPERATIVO ANNUALE (P.O.A.) 2023 – Progetto di Forestazione Pubblica
Progetto Generale**



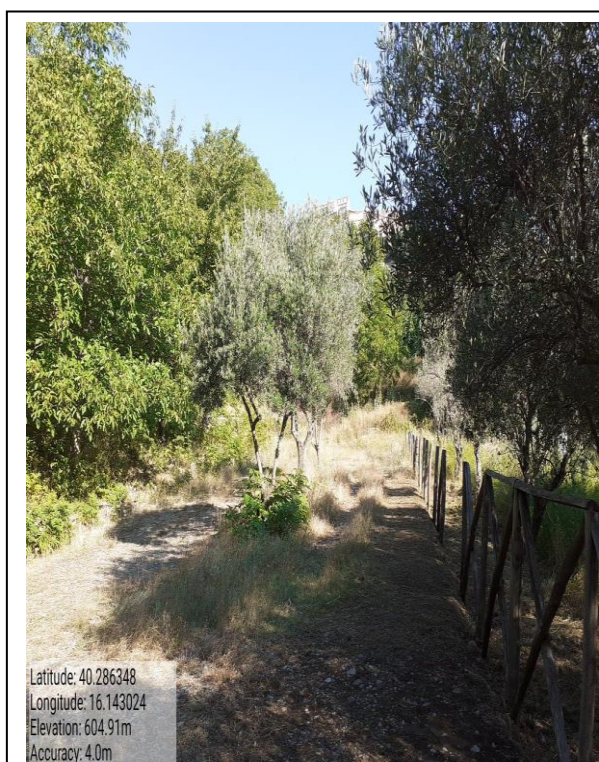
missione 4.3.12.2 Piett a Cret villetta



missione 4.3.13.2 U Lau Marin

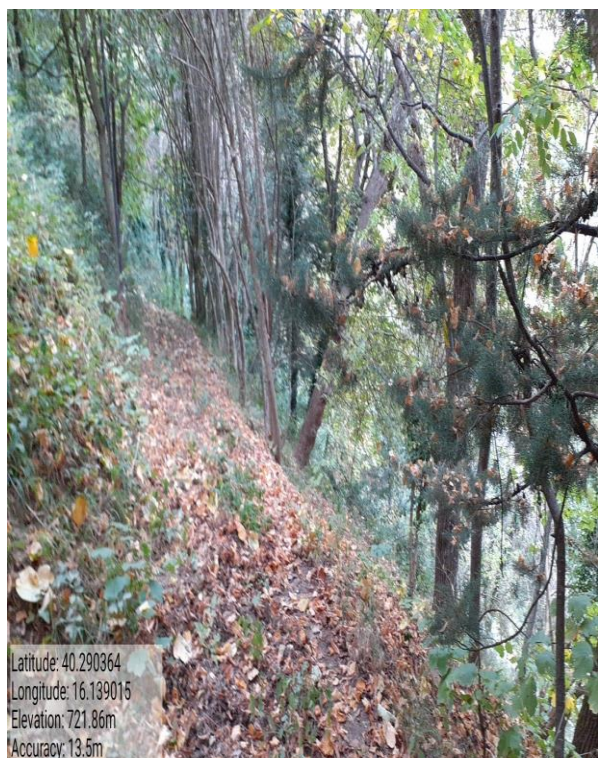


missione 4.3.14.2 fontana Pietro Antonio



missione 5.1.1 Carmine

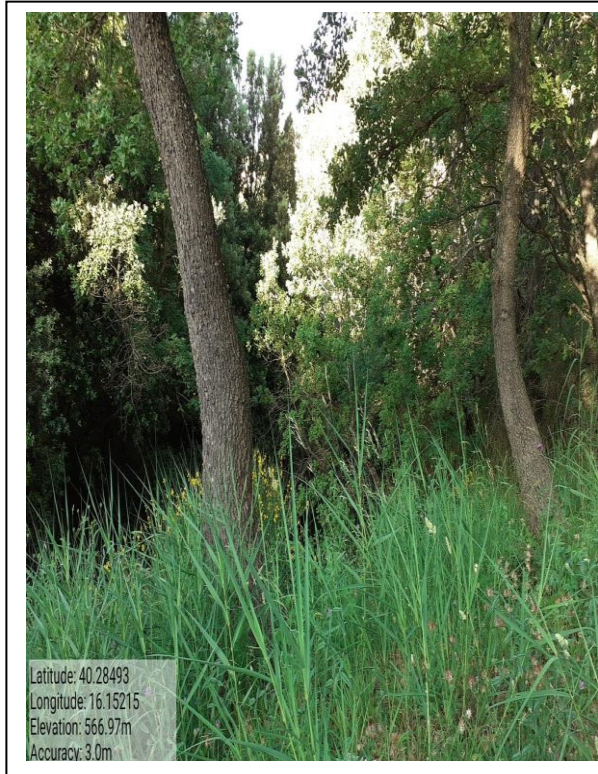
**PROGRAMMA OPERATIVO ANNUALE (P.O.A.) 2023 – Progetto di Forestazione Pubblica
Progetto Generale**



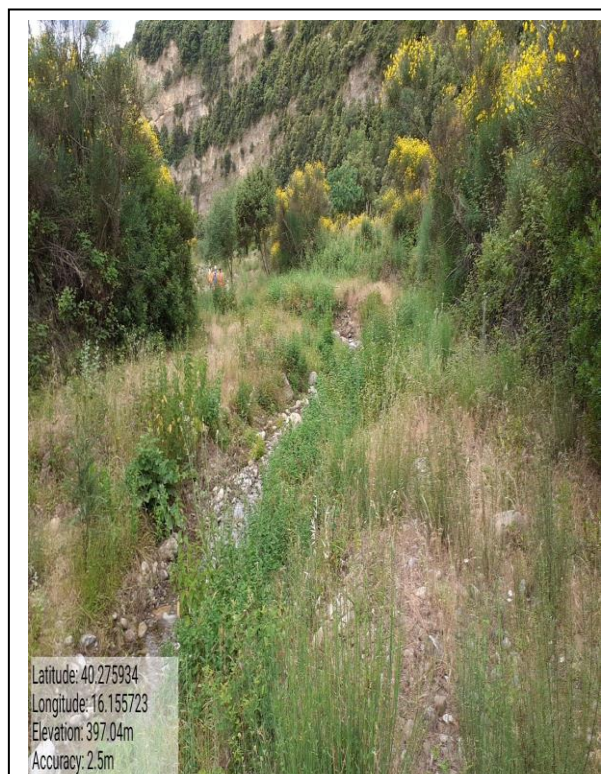
missione 5.2.1 Manca Fontana



missione 5.3.1 Bruscalupo



missione 6.1.1.1 fosso San Vito

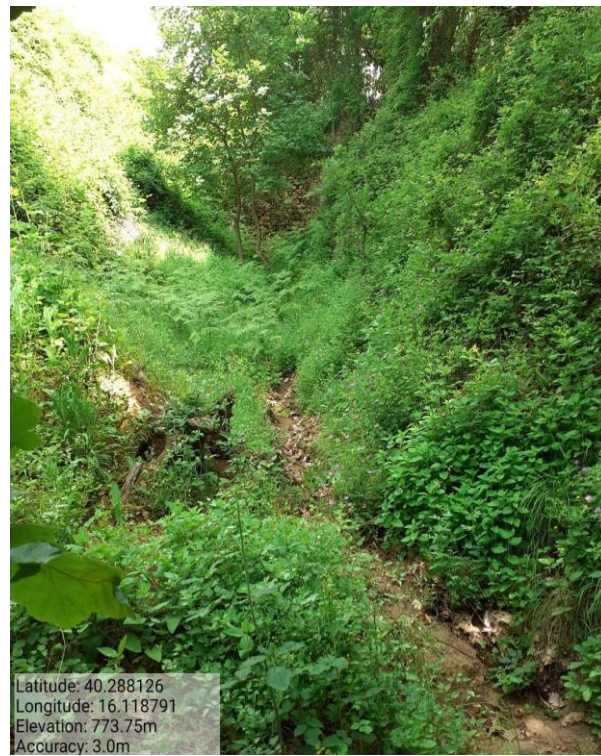


missione 6.1.2.1 fosso Cornicello

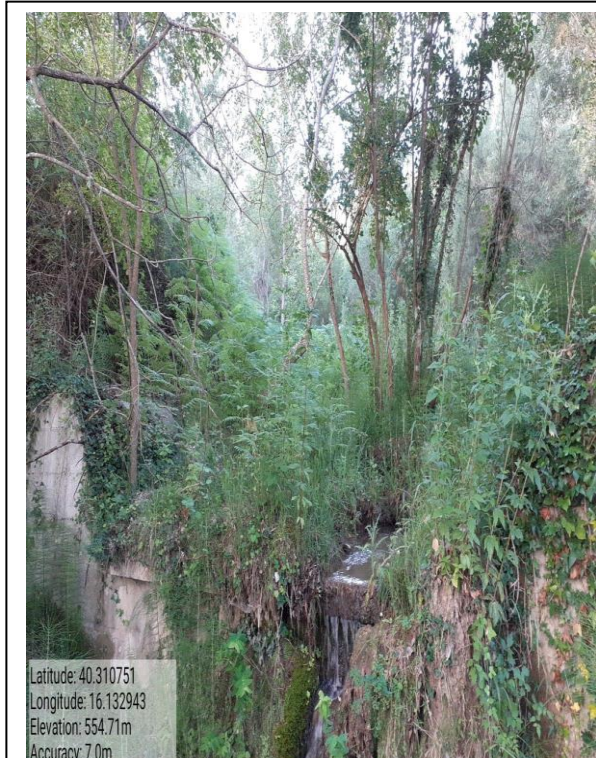
**PROGRAMMA OPERATIVO ANNUALE (P.O.A.) 2023 – Progetto di Forestazione Pubblica
Progetto Generale**



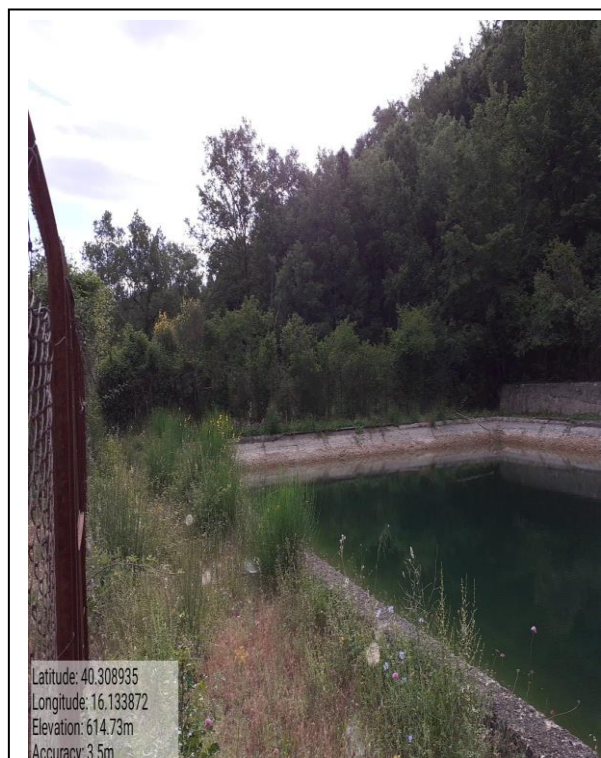
missione 6.1.3.1 fosso Vena



missione 6.1.4.1 fosso Cerruolo



missione 6.1.5.1 fosso Manganello



missione 6.1.6.1 Vasca Ficarrola

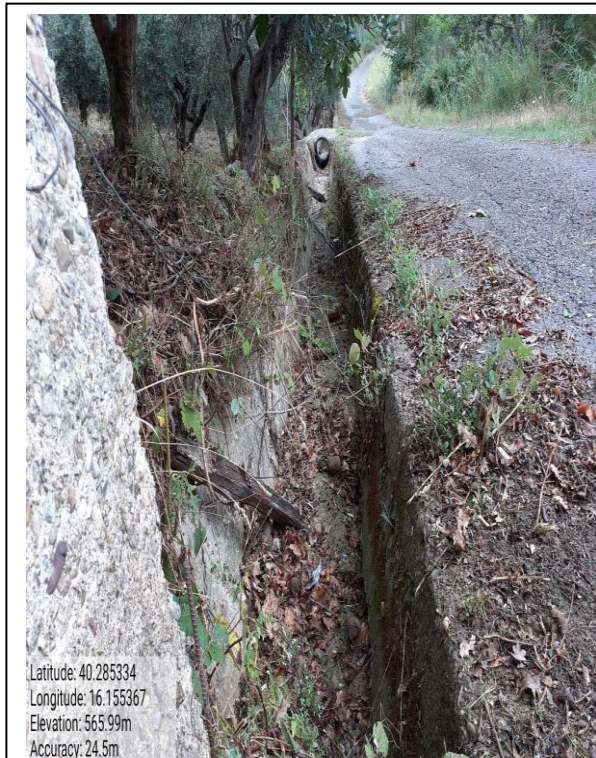
**PROGRAMMA OPERATIVO ANNUALE (P.O.A.) 2023 – Progetto di Forestazione Pubblica
Progetto Generale**



missione 6.1.7.1 Autosollevamento Ficarrola



missione 6.1.8.2 La Vena



missione 6.1.9.2 La Monaca



missione 6.1.10.2 Santa Lucia

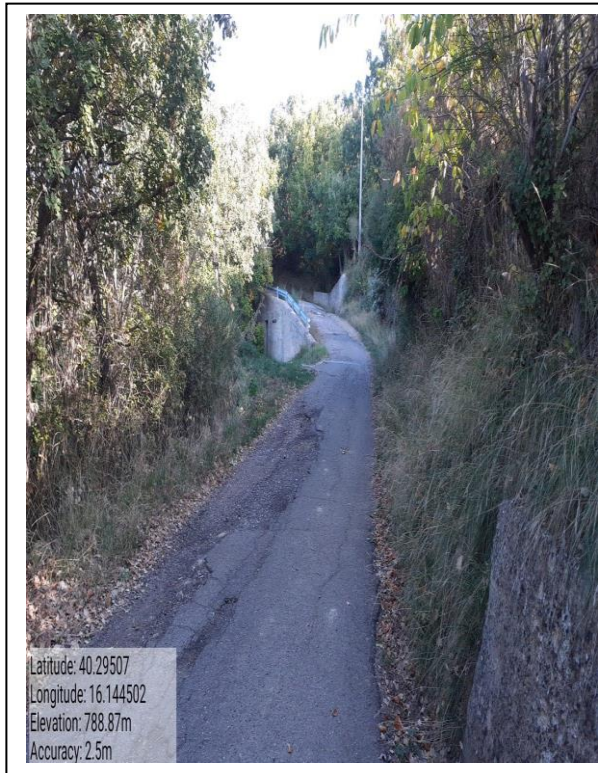
**PROGRAMMA OPERATIVO ANNUALE (P.O.A.) 2023 – Progetto di Forestazione Pubblica
Progetto Generale**



missione 6.1.11.2 San Vito



missione 6.3.12.3 – 6.3.12.4 Santa Lucia



missione 6.3.13.3 – 6.3.13.4 valle Valterrata



missione 6.3.14.3 – 6.3.13.4 San Vito

**PROGRAMMA OPERATIVO ANNUALE (P.O.A.) 2023 – Progetto di Forestazione Pubblica
Progetto Generale**



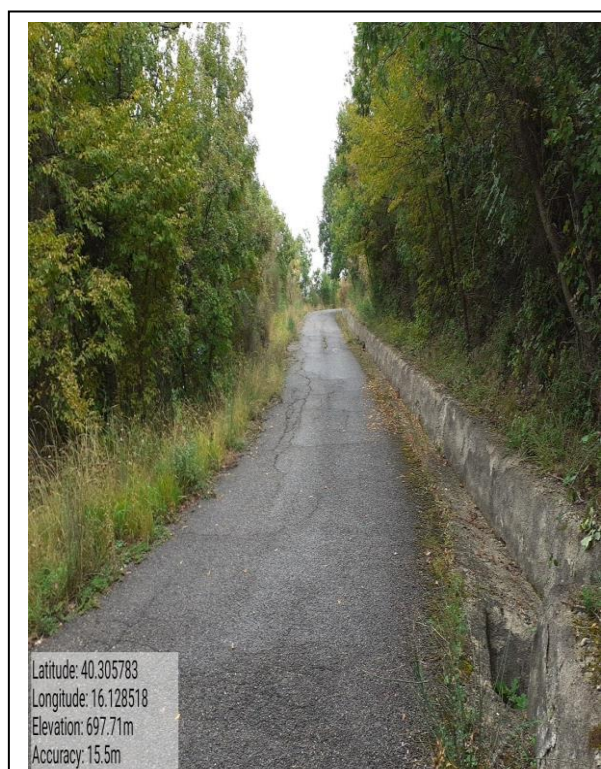
missione 6.3.15.3 – 6.3.15.4 coll. 598-centro abitato



missione 6.3.16.3 – 6.3.16.4 Cannavarrea

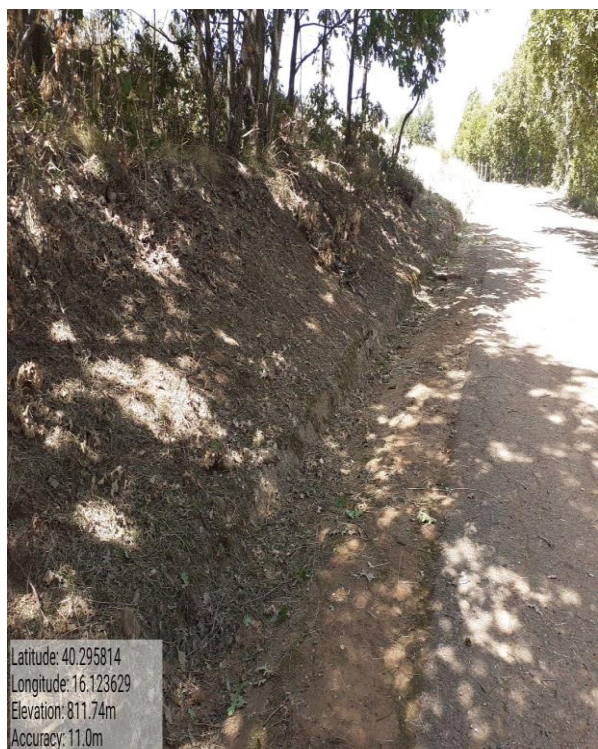


missione 6.3.17.3 – 6.3.17.4 Cervone-Pantoni



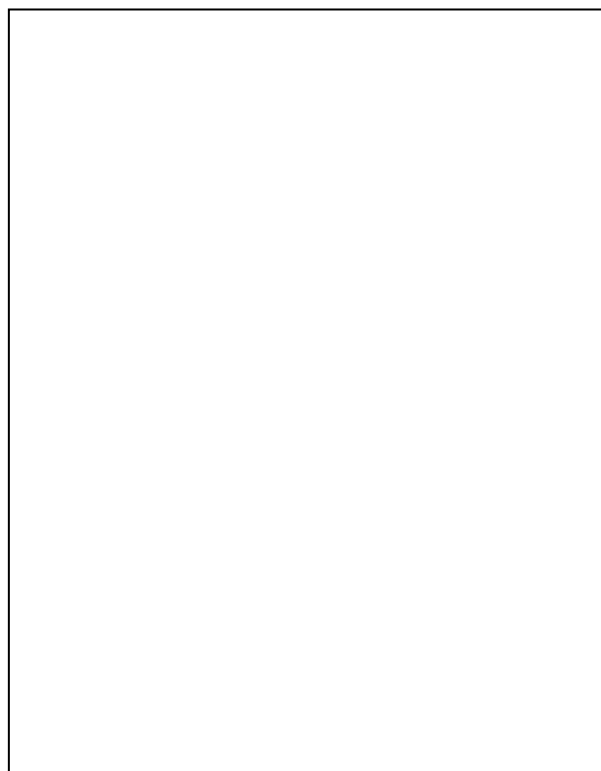
missione 6.3.18.3 – 6.3.18.4 Ficarrola

**PROGRAMMA OPERATIVO ANNUALE (P.O.A.) 2023 – Progetto di Forestazione Pubblica
Progetto Generale**



missione 6.3.19.3 – 6.3.19.4 Parriello San Nicola

missione 6.3.20.3 – 6.3.20.4 Difesa d'Agri



missione 6.3.21.3 – 6.3.21.4 Gallicchio Vetere