











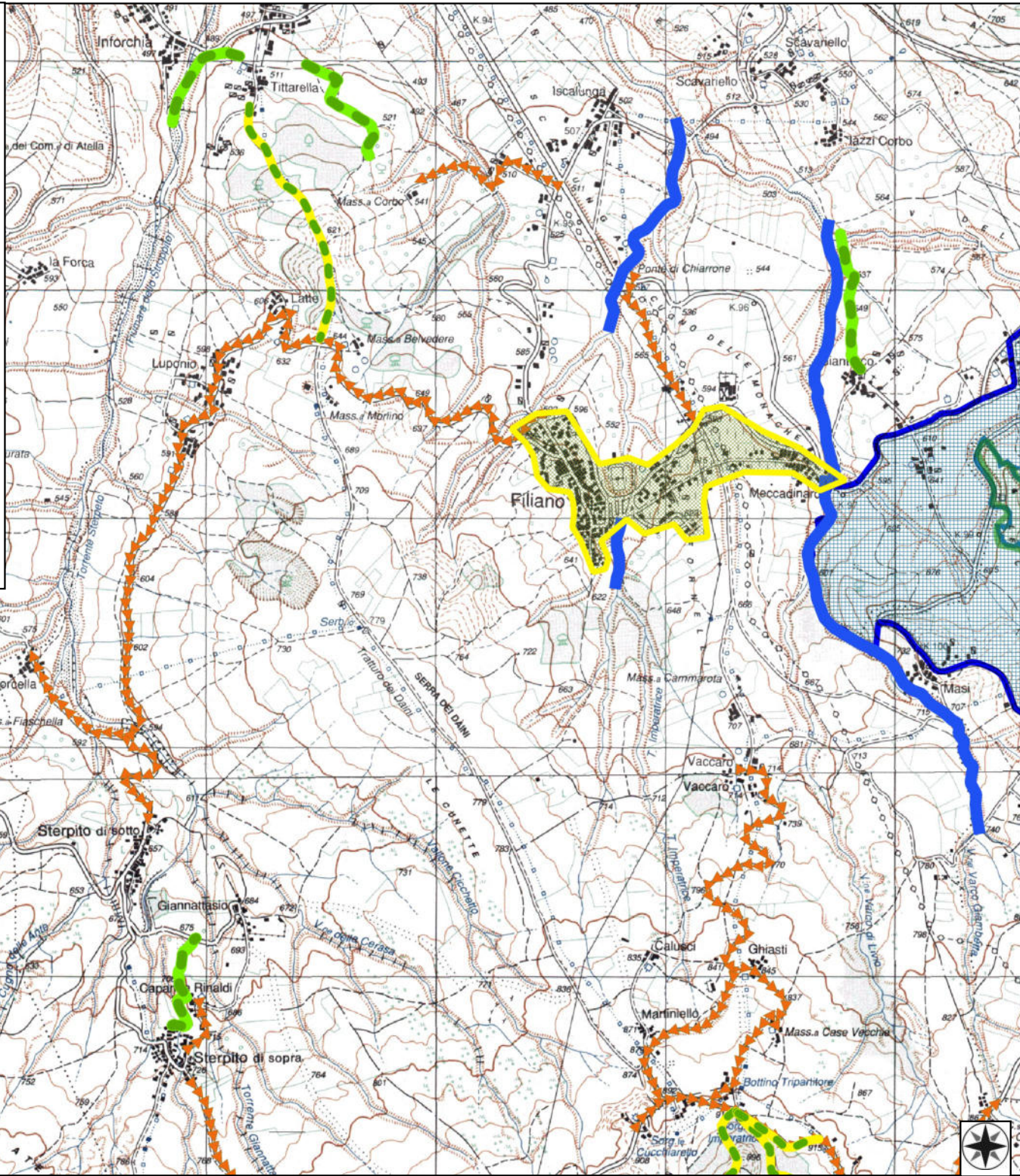


FILIANO POA 2023

-  AREA P_SIC_2019
-  AREA PARCO
-  AREA SIC
-  AREA ZPS
-  AREA ZSC
-  BENI PAESAGGISTICI ART. 136
-  BENI PAESAGGISTICI ART. 142
-  MANUTENZIONE VERDE URBANO E PERIURBANO
-  MANUTENZIONE FASCIA TAFLIA FUOCO
-  MANUTENZIONE TRATTURI
-  MANUTENZIONE ASTE FLUVIALI
-  DECESPUGLIAMENTO STRADALE E PULIZIA CUNETTE

IGM_25000



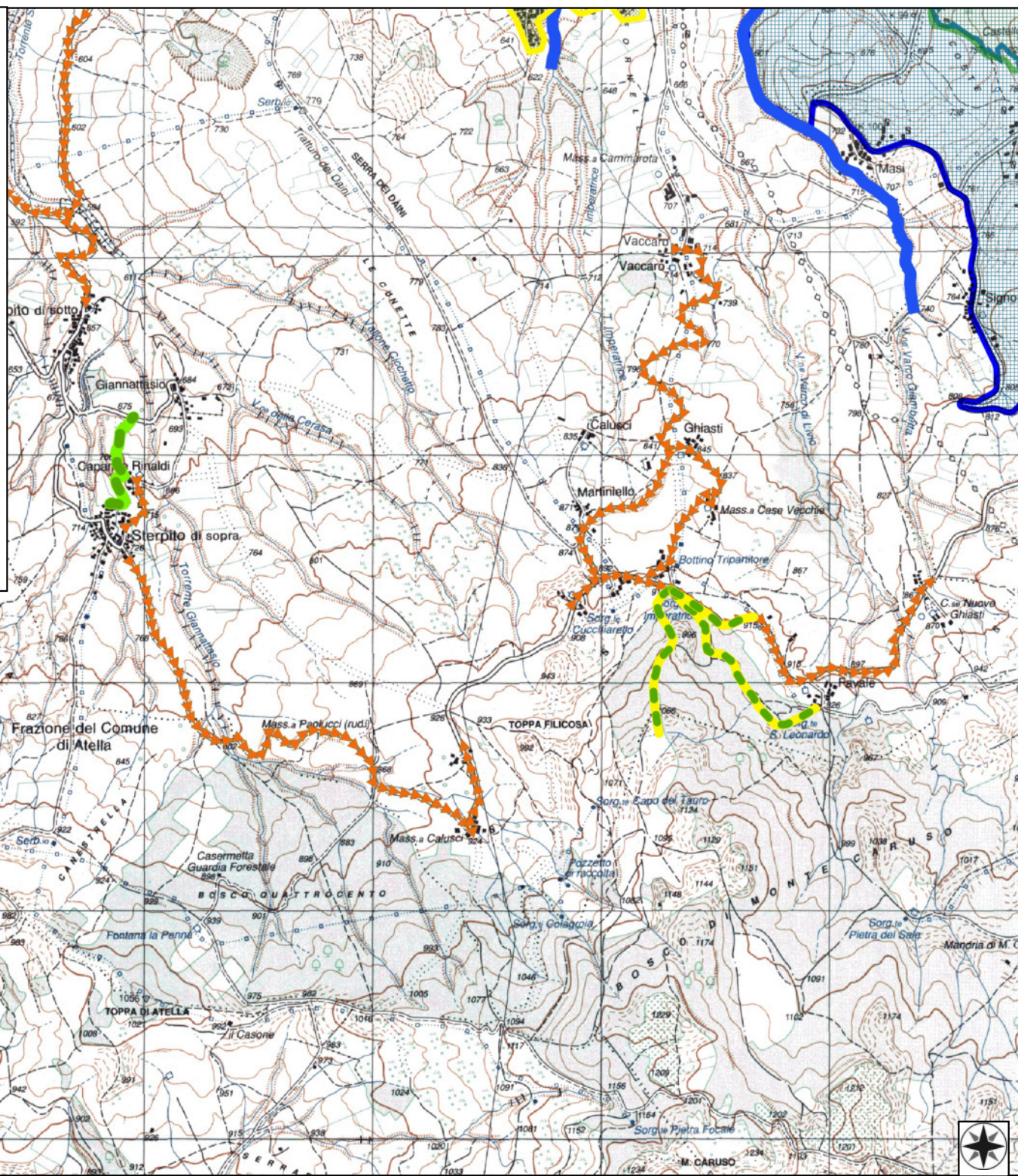
0 500 1000 m

TOPPA ARTICA

FILIANO POA 2023

- AREA P_SIC_2019
- AREA PARCO
- AREA SIC
- AREA ZPS
- AREA ZSC
- BENI PAESAGGISTICI ART. 136
- BENI PAESAGGISTICI ART. 142
- MANUTENZIONE VERDE URBANO E PERIURBANO
- MANUTENZIONE FASCIA TAFLIA FUOCO
- MANUTENZIONE TRATTURI
- MANUTENZIONE ASTE FLUVIALI
- DECESPUGLIAMENTO STRADALE E PULIZIA CUNETTE

IGM_25000



0 500 1000 m

